

Outdoor Hour Challenge

Creepy Things Ebook

Sample Challenge

Table of Contents

Resource and Supplies List

General Instructions

Advanced Study Option Explanation

Banana Slug

Tarantula/Tarantula Hawk

Black Widow

Scorpion

Leech

Muskrat

Sphinx Moth

Cicada

Millipede

Poison Oak

Banana Slug (*Ariolimax columbianus*)– Mollusk

Banana Slug Notebook Pages

For an alternate study, see the [Garden Snail Outdoor Hour Challenge](#).

Inside Preparation Work:

- ◆ Do your research before you look for banana slugs. Here are some links to check out for information: [Banana Slug-Creature Feature](#), [Deep Look- Banana Slug](#) and [Animal Diversity Web-Banana Slugs](#).
- ◆ Watch this informative video: [Banana Slugs](#).
- ◆ Advanced Study: Here is an awesome video that goes into more detail about the banana slug: [Banana Slug Unpeeled](#).

Fun Banana Slug Facts

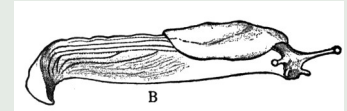
- Largest North American land mollusk
- Up to 10 inches long
- Bright to dark yellow, sometimes has spots
- 2 distinctive sets of tentacles
- Tentacles can regenerate if lost
- Lives in moist environments

Outdoor Hour Time:

- ◆ If you live near the redwood forest or you are planning to visit them as part of this study, keep your eye out for a banana slug crawling on the ground or on tree trunks. Remember an alternate study would be the garden snail challenge referenced in the link above.

Things to Observe

- Where did you find your banana slug?
- How does the banana slug walk? Does it leave a track like a snail does?
- Look for the eyes at the end of the tentacles.
- Can you see the slug's breathing hole?
- Do you see the banana slug's slime?



Follow-Up Activity:

- ◆ Create a nature journal page for the banana slug. There are notebook pages included in this ebook for you to use.
- ◆ On the back of your notebook page, write your favorite thing about the banana slug.
- ◆ Advanced Study: Research more about the anatomy of the banana slug. Draw and label a banana slug's body parts. Here is a website with an illustration of the body parts labeled: [Banana Slug](#).

Difference Between a Slug and a Snail

Slugs have no visible shell (or a shell so small it can't contain the body).

Snails have a coiled visible shell that contains most or all of the body.

Banana Slug Study



Draw a banana slug.

Describe the banana slug.

Look For:

- 2 sets of tentacles
- Breathing hole
 - Mantel
 - Mouth
- Foot fringe
- Color and length
 - Habitat

BANANA SLUG STUDY

Observations:

Sketch

